

FIGURE 1
FORWARD CARRIERS OF TANDEM AXLES
 (USE WITH CHART 1)

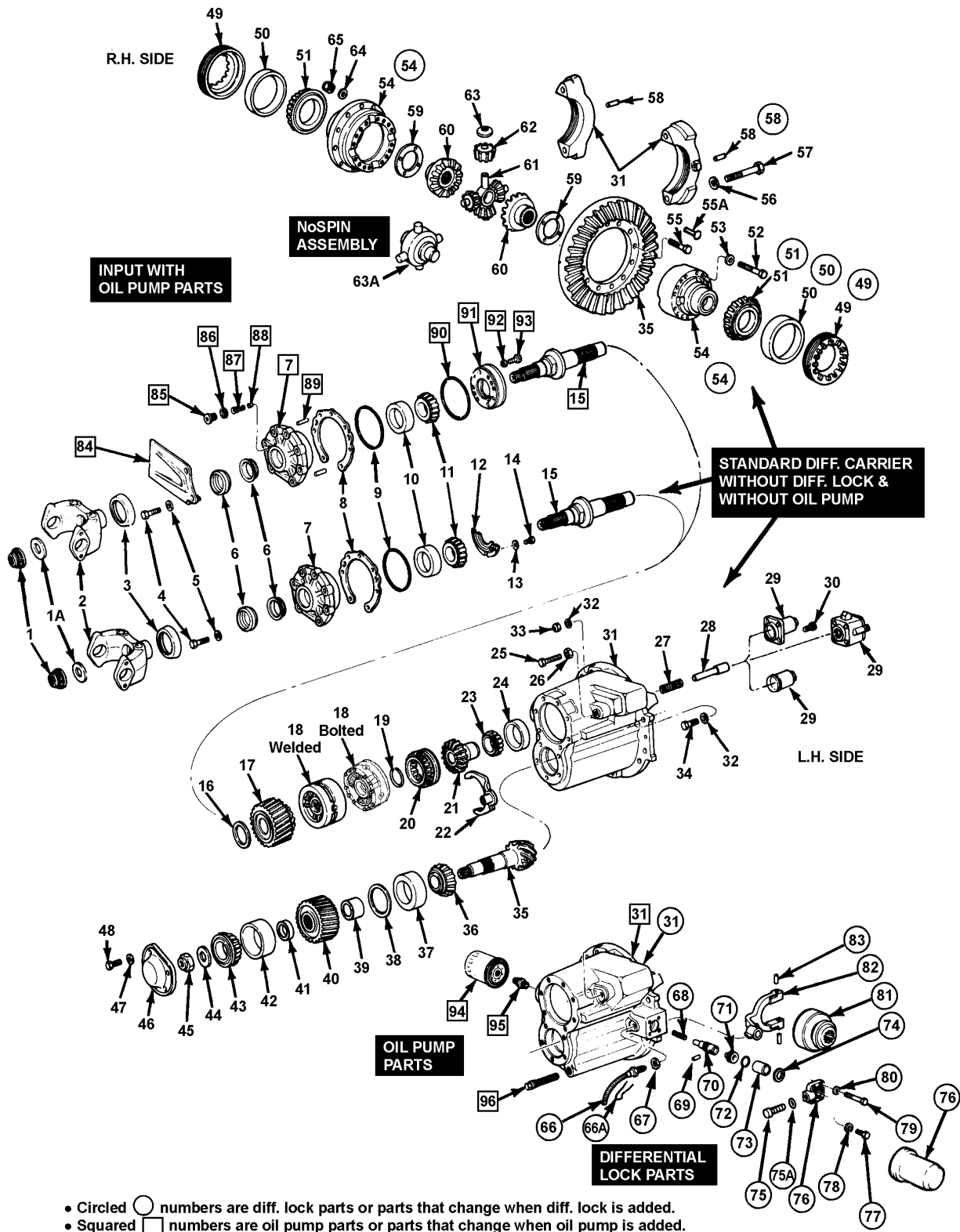
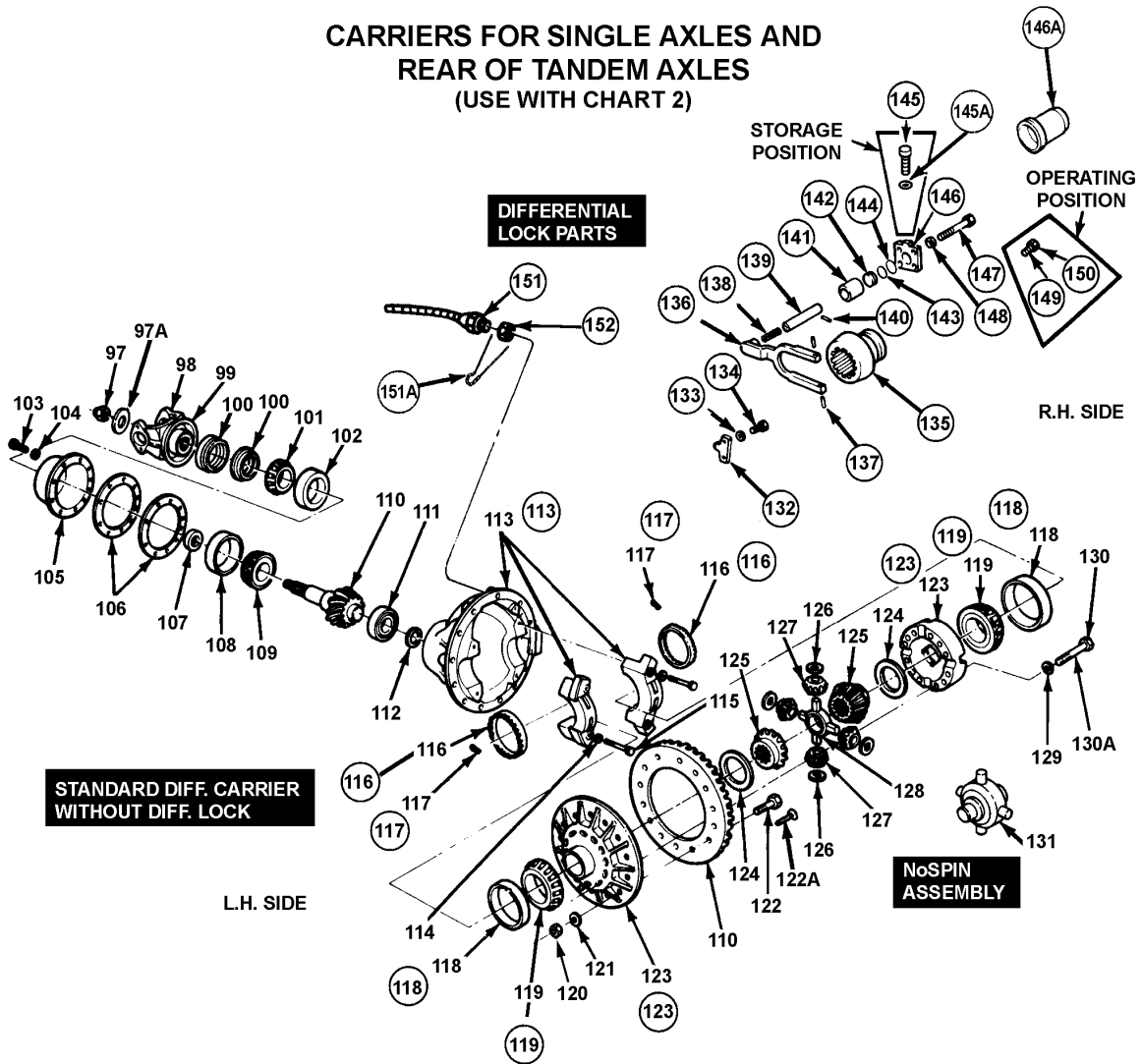
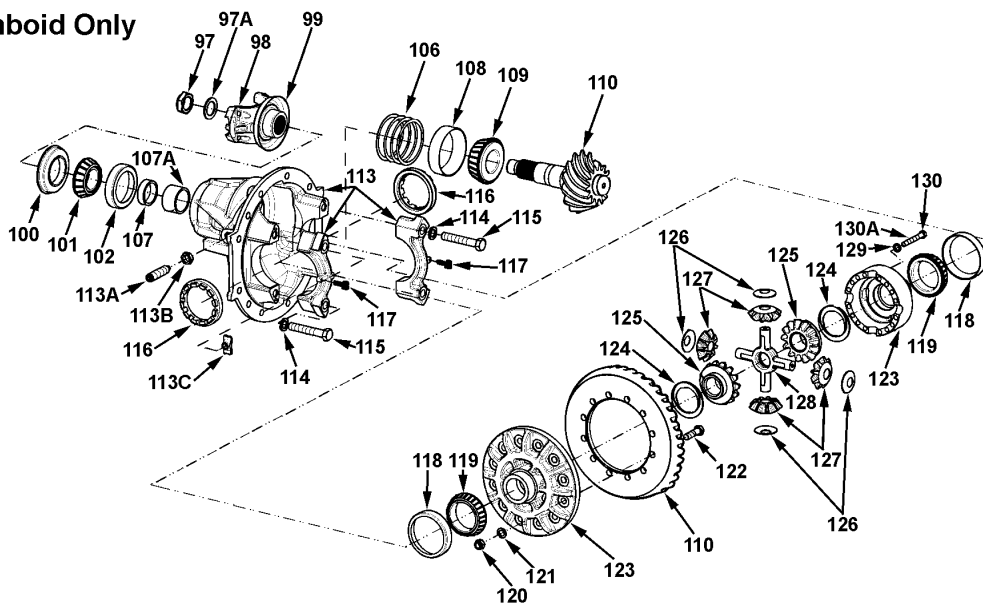


FIGURE 2
CARRIERS FOR SINGLE AXLES AND
REAR OF TANDEM AXLES
 (USE WITH CHART 2)

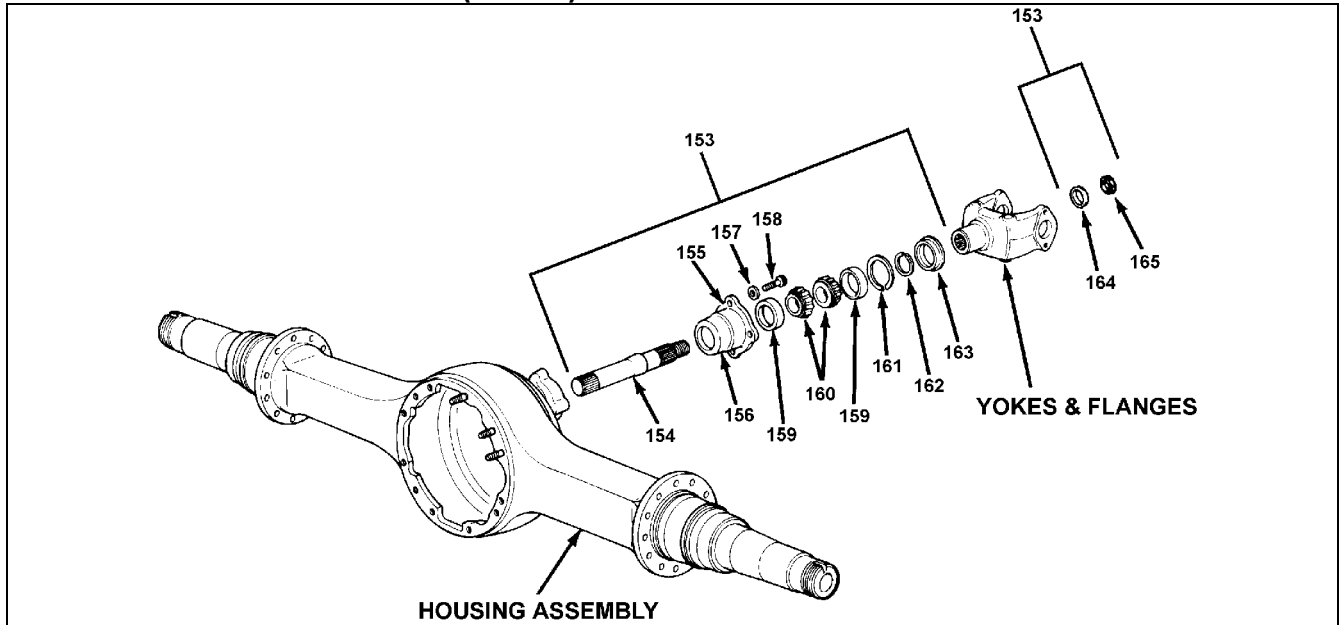


Amboid Only



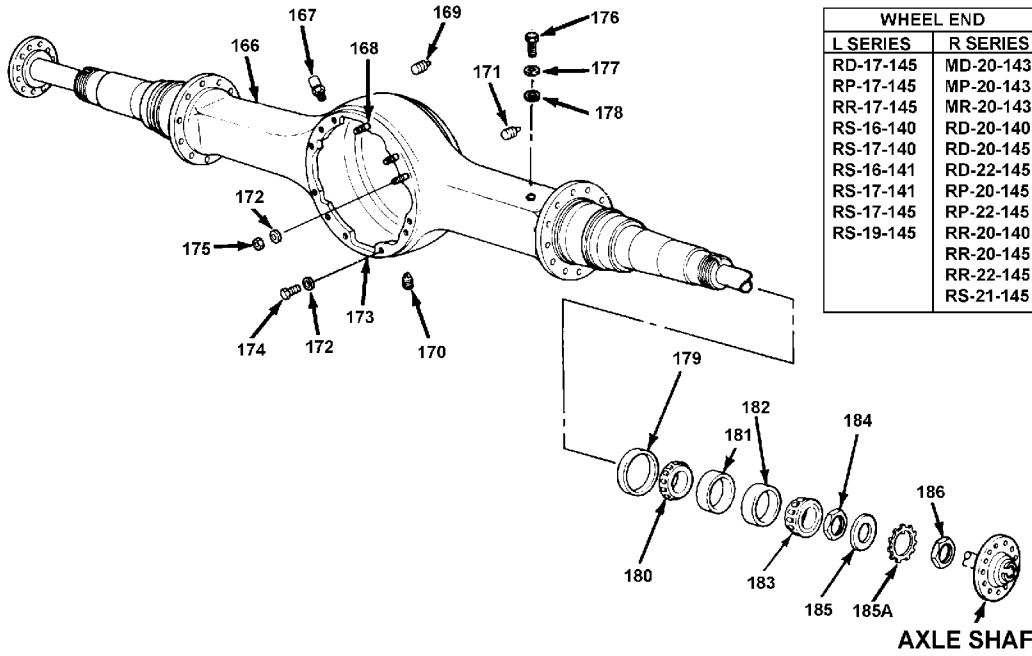
• Circled ○ numbers are diff. lock parts or parts that change when diff. lock is added.

OUTPUT (THRU) SHAFT ASSEMBLY PARTS



| ITEM | DESCRIPTION | REMARKS | AXLE MODEL | QTY | PART NUMBER |
|------|---|--|----------------------------|------------|----------------|
| 153 | Output (thru) shaft, bearing cage and seal assembly | (Includes Items 154, 156, 159, 160, 161, 162, 163, 164, 165) | All | 1 | A1-3226-T-1112 |
| 154 | Shaft - output (thru) | | All others | 1 | 3297-E-1019 |
| | | | Original design 140 tandem | 1 | 3297-N-1158 |
| 155 | Silastic gasket | 3 oz. tube | All | 1 | 2297-A-7021 |
| 156 | Bearing cage and inner cup assembly - output | | All others | 1 | A-3226-T-1112 |
| | | | Original design 140 tandem | 1 | A1-3226-T-1112 |
| 157 | Washer - output bearing cage | | All | 4 | 1229-K-1597 |
| 158 | Capscrew - output bearing cage | | All | 4 | 15-X-387 |
| 159 | Cup - inner and outer output bearing | | All others | 2 | JLM-104910 |
| | | | Original design 140 tandem | 2 | LM-603011 |
| 160 | Cone - inner and outer output bearing | | All others | 2 | LM-104949 |
| | | | Original design 140 tandem | 2 | LM-603049 |
| 161 | Snap ring spacer - output bearing (variable thickness) (Spacer kits are available to service these assemblies) KIT 530 is used for the original design 140 tandem. KIT 576 is used for all other models in this catalog | 3.94mm/.155 inch | All others | 1 | 1229-P-2590 |
| | | 4.01mm/.158 inch | Original design 140 tandem | 1 | 1229-A-2237 |
| | | 4.09mm/.161 inch | All others | 1 | 1229-P-2591 |
| | | 4.17mm/.164 inch | Original design 140 tandem | 1 | 1229-B-2238 |
| | | 4.24mm/.167 inch | All others | 1 | 1229-R-2592 |
| | | 4.32mm/.170 inch | Original design 140 tandem | 1 | 1229-C-2239 |
| | | 4.39mm/.173 inch | All others | 1 | 1229-S-2593 |
| | | 4.47mm/.176 inch | Original design 140 tandem | 1 | 1229-D-2240 |
| | | 4.55mm/.179 inch | All others | 1 | 1229-T-2594 |
| | | 4.62mm/1.82 inch | Original design 140 tandem | 1 | 1229-E-2241 |
| | | | All others | 1 | 1229-U-2595 |
| | | | Original design 140 tandem | 1 | 1229-F-2242 |
| 162 | | Snap ring spacer - output bearing/yoke | | All others | 1 |
| | | | Original design 140 tandem | 1 | 1229-G-2243 |
| 163 | Oil seal - output bearing cage | | All others | 1 | 1229-W-2597 |
| | | | Original design 140 tandem | 1 | 1229-H-2244 |
| 164 | Washer - output yoke and shaft | Included in KIT 2636 | All others | 1 | 1229-X-2598 |
| | | Included in KIT 2637 | Original design 140 tandem | 1 | 1229-Y-2599 |
| 165 | Nut - output yoke and shaft | Included in KIT 2636 | All others | 1 | 1229-J-2246 |
| | | Included in KIT 2637 | Original design 140 tandem | 1 | 1229-K-2247 |
| | | | All others | 1 | 1229-L-2248 |
| | | | Original design 140 tandem | 1 | 1829-A-859 |
| | | | All others | 1 | A-1205-P-2590 |
| | | | Original design 140 tandem | 1 | A-1205-G-2425 |
| | | | All others | 1 | 1229-A-2653 |
| | | | Original design 140 tandem | 1 | 1229-T-1736 |
| | | | All others | 1 | 40-X-1236 |
| | | | Original design 140 tandem | 1 | 40-X-1237 |

HOUSING ASSEMBLY PARTS



| ITEM | DESCRIPTION | REMARKS | AXLE MODEL | QTY | PART NUMBER |
|-----------|--------------------------------------|---|------------------------------------|-----|---------------|
| 167 | Breather assembly | | All | 1 | A-1199-P-1394 |
| 168 | Stud - housing to carrier | | All forward carriers | 2 | 4-X-1837 |
| 169 | Plug - heat indicator | | All | 1 | P-28S |
| 170 | Plug - magnetic oil drain and fill | | All | 1 | 1250-E-473 |
| 171 | Plug - non-magnetic oil fill | | All | 1 | P-212 |
| 172 | Washer - carrier to housing | | All | 12 | 1229-U-1503 |
| 173 | Silastic gasket - housing to carrier | | All | 1 | 2297-A-7021 |
| 174 | Capscrew - carrier to housing | | All forward carriers | 3 | S-21022-2 |
| | | | | 7 | 10-X-1594 |
| | | | All other single and rear carriers | 8 | 10-X-1594 |
| | | | | 4 | S-21020-2 |
| | | | RR22145, RR21145 | 9 | 10-X-1594 |
| | | | | 4 | S-21016-2 |
| 175 | Nut - carrier to housing stud | | All forward carriers | 2 | N-110-1 |
| 176 | Capscrew - brake line bracket | | All | 2 | S-258-2 |
| 177 | Gasket - brake line bracket | | All others | 2 | 2208-P-536 |
| | | | RS16140, RS17140, RS19145, RS21145 | 4 | 2208-P-536 |
| 178 | Washer - brake line bracket | | All others | 2 | 1229-E-1669 |
| | | | RS16140, RS17140, RS19145, RS21145 | 4 | 1229-E-1669 |
| 179 | Oil seal - wheel end | | "L" wheel end | 2 | A-1205-W-1349 |
| | | | "R" wheel end | 2 | A-1205-Q-2487 |
| 180 | Cone - wheel bearing (inner) | | "L" wheel end | 2 | 47686 |
| | | | "R" wheel end | 2 | 594A |
| 181 | Cup - wheel bearing (inner) | | "L" wheel end | 2 | 47620 |
| | | | "R" wheel end | 2 | 592A |
| 182 | Cup - wheel bearing (outer) | | "L" wheel end | 2 | 39520 |
| | | | "R" wheel end | 2 | 572 |
| 183 | Cone - wheel bearing (outer) | | "L" wheel end | 2 | 39590 |
| | | | "R" wheel end | 2 | 580 |
| 184 | Nut - wheel bearing (inner) | | "L" wheel end | 2 | 1227-Z-1040 |
| | | | "R" wheel end | 2 | 1227-W-517 |
| 185, 185A | Lock washer and tanged lock washer | Must purchase kit which includes both items | "L" wheel end | 2 | KIT 2761 |
| | | | "R" wheel end | 2 | 1229-F-4634S |
| 186 | Nut - wheel bearing (outer) | | "L" wheel end | 2 | 1227-E-1045 |
| | | | "R" wheel end | 2 | 1227-R-330 |