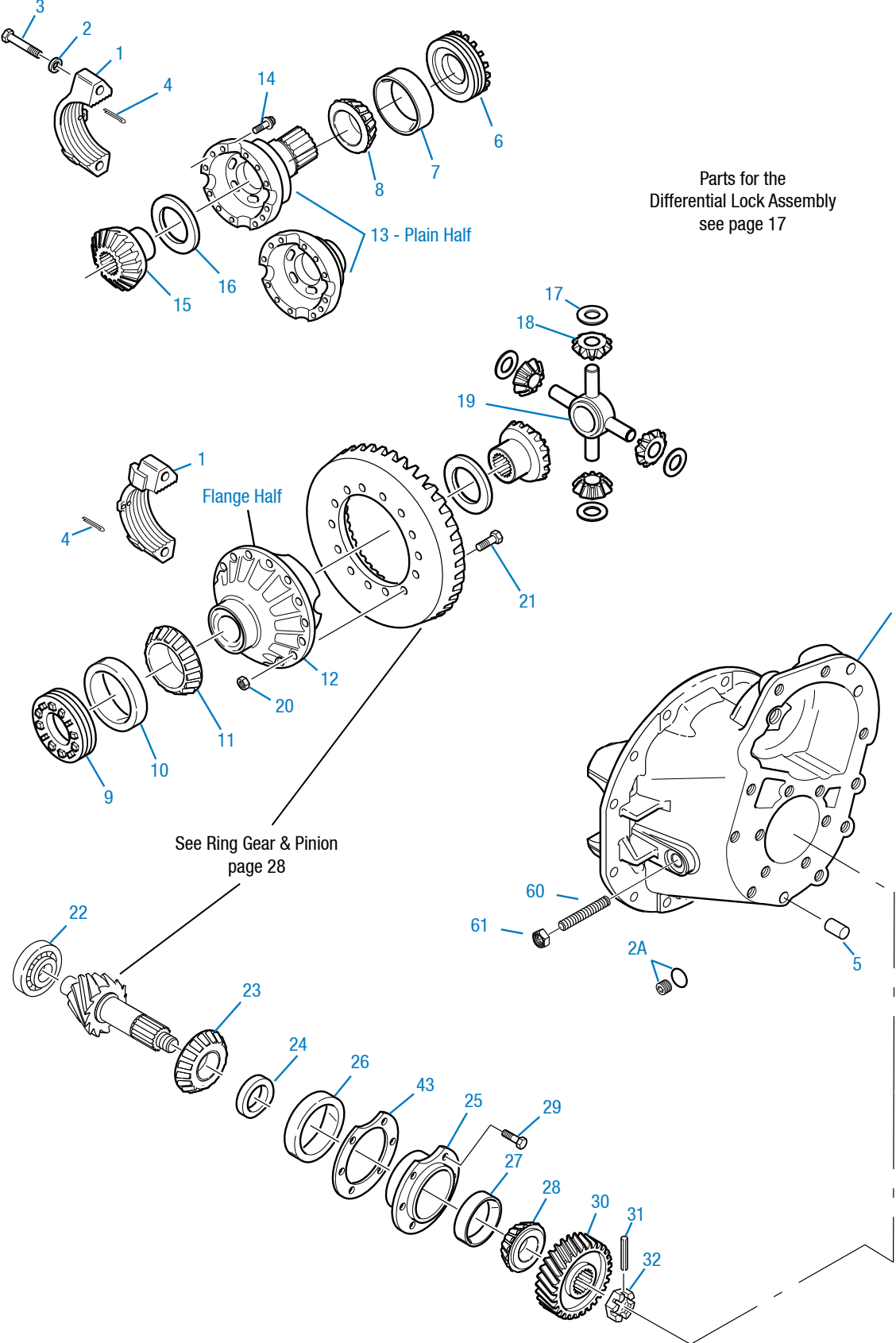


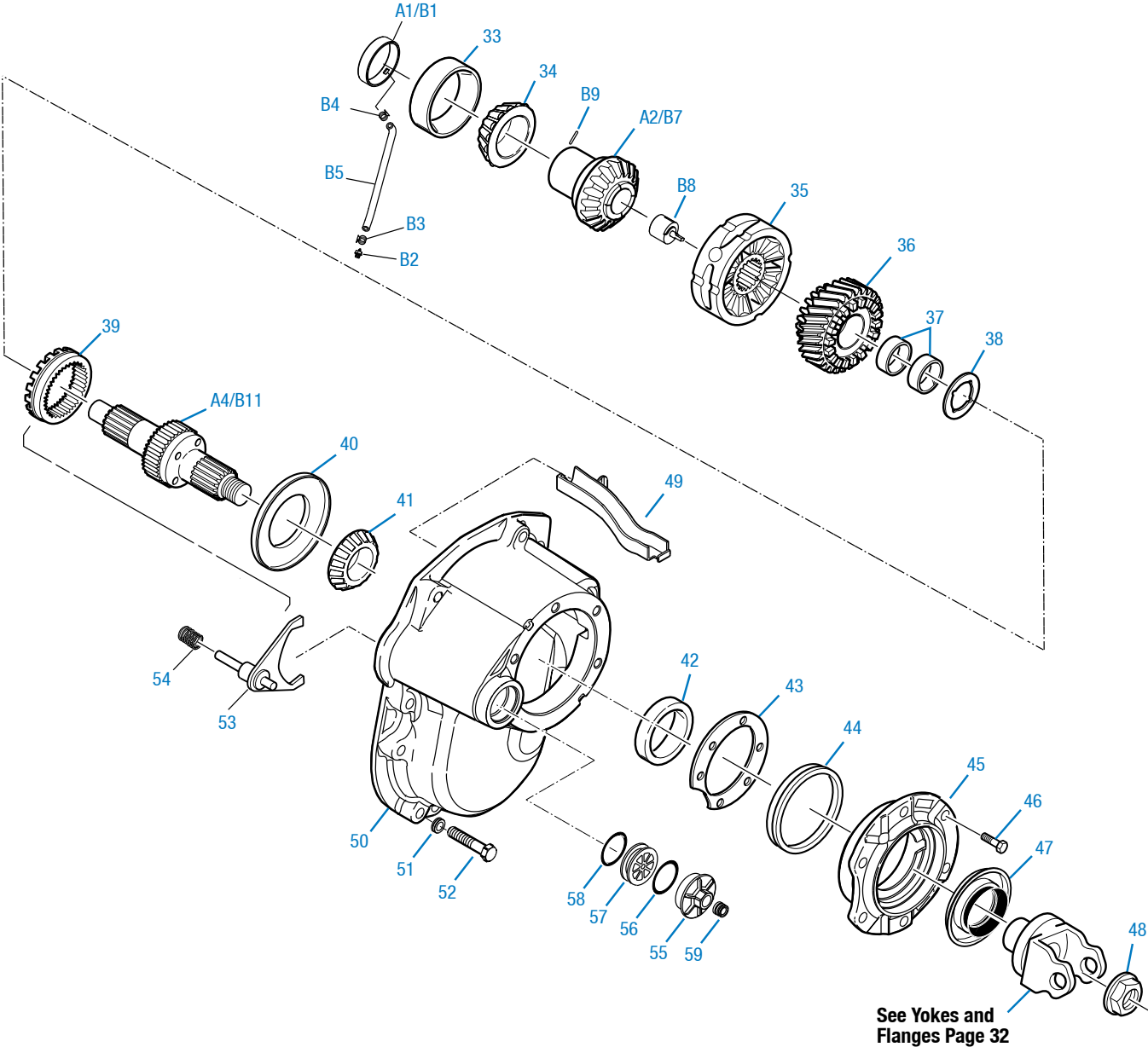
Single Reduction-Forward Axles After June 2008

Single Reduction-Forward Axles - After June 2008



Single Reduction-Forward Axles After June 2008

Single Reduction-Forward Axles - After June 2008



Single Reduction-Forward Axles After June 2008

Item	Description	Qty	DSP40(P) DSP41(P)	DDP40(P) DDP41(P)	Notes	
BASIC OVERHAUL KIT			504030	504031	Contents Identified with •	
1	Forward Carrier/Cap Sub-Assy				Includes items 1-3 and #33 brg cup	
	Standard Mdls 132038-NSS	1	132466	---		
	Diff-Lock Mdls 132043-NSS	1	---	132467		
2	Flat Washer	4	210288	210288		
2A	Plug, O-Ring	1	131809	131809	O-ring not sold seperately	
3	Capscrew	4	210095	210095		
4	Cotter Pin	2	090873	090873		
5	Dowel Pin	2	007641	007641		
6	Diff Brg Adjuster - Plain Half	1	129130	128616		
7	Brg Cup - Plain Half	1	129566•	15092•		
8	Brg Cone - Plain Half	1	129565•	128604•		
9	Diff Brg Adjuster - Flange Half	1	129128	129128		
10	Brg Cup - Flange Half	1	129564•	129564•		
11	Brg Cone - Flange Half	1	129563•	129563•		
WHEEL DIFF CASE KITS					Includes items 12-14	
12	Diff Case-RH (Flg Half)					
	133737 note-12	1	508653	508724	Ratios 2.64 to 3.25	
	133738 note-12		508654	508725	Ratios 3.36 to 3.90	
	133739 note-12		508655	508726	Ratios 4.11 to 4.88	
	133740 note-12		508656	508727	Ratios 5.29 to 7.17	
13	Diff Case-LH (Plain Half)-standard	1	132437	---	See note-12 below	
	Diff Case-LH (Plain Half)-diff lock	1	---	128607	See note-12 below	
14	Capscrew	12	127465	127465		
WHEEL DIFF SIDE GEAR KIT			510397	510397	Includes items 15-19	
WHEEL DIFF KIT w/o SIDE GEARS			510396	510396	Includes items 16-19	
15	Side Gear - 41 Inv Spline	2	127368	127368		
16	Side Gear Thrust Washer	2	127386•	127386•		
17	Side Pinion Thrust Washer	4	129305•	129305•		
18	Side Pinion	4	133784	133784		
19	Diff Spider	1	129599	129599		
RING GEAR NUT & BOLT KIT			1	508652	508652	Includes items 20-21
20	Nut - Ring Gear	16	126216	126216		
21	Bolt - Ring Gear	16	129686	129686		
22	Pinion Pilot Brg	1	127484•	127484•		
23	Pinion Brg Cone - Inner	1	129560•	129560•		

NSS - Not Sold Separately

NOTE 12: All diff case halves are now available separately. Design enhancements in the diff cases were released in 2007, refer to bulletin ABIB-0704.

Single Reduction-Forward Axles After June 2008

Item	Description	Qty	DSP40(P) DSP41(P)	DDP40(P) DDP41(P)	Notes
24	PINION BRG SPACER (SVC KIT)	AR	504043	504043	Individual Pinion Bearing Spacers Listed on pg 11
25	Pinion Brg Cage & Cup Assy	1	129767	129767	Cage#127488C Includes item 25-27
26	Pinion Brg Cup - Inner	1	129561•	129561•	
27	Pinion Brg Cup - Outer	1	012495•	012495•	
28	Pinion Brg Cone - Outer	1	127535•	127535•	
29	Capscrew	6	210115	210115	
30	Pinion Helical Gear	1	127523	127523	
31	Roll Pin	1	118807	118807	
32	Slotted Pinion Nut	1	126182	126182	M42-1.5 (55mm socket)
A	Manifold Parts Kit - Non Pump	1	513880	513880	NON PUMP - Includes 132435
A1	Seal Manifold Assy - Non Pump #132435-NSS	1	—	—	NON PUMP - Must order kit
A2	Output Side Gear - Non Pump	1	132443	132443	NON PUMP
A3	Input Shaft Kit - Non Pump	1	504026	504026	NON PUMP - Includes 132447,128049,132439
A4	Input Shaft-Non Pump #132447-NSS	1	—	—	NON PUMP - Must order kit
B	Manifold Parts Kit - Pump Model	1	504029	504029	PUMP MODELS - Includes 133964,134010, 129338,134011,131366
B1	Seal Manifold Assy Pump #131366-NSS	1	—	—	PUMP MODELS - Must order kit
B2	Filter Screen Assy	1	133964	133964	PUMP MODELS
B3	Collar Lock	1	134010	134010	PUMP MODELS
B4	Clamp	1	129338	129338	PUMP MODELS
B5	Lube Hose	1	134011	134011	PUMP MODELS
B6	Lube Pump Kit	1	504028	504028	PUMP MODELS - Includes 132060, 131541, 132061, 131368
B7	Output Side Gear - Pump Model #132061-NSS	1	504028	504028	PUMP MODELS
B8	Lube Pump #131368-NSS	1	504028	504028	PUMP MODELS
B9	Pump Locking Pin	1	131541	131541	PUMP MODELS
B10	Input Shaft Kit - Pump Model	1	504027	504027	PUMP MODELS - Includes 132446, 128049, 132439
B11	Input Shaft-Pump Model #132446-NSS	1	—	—	PUMP MODELS - Must order kit
33	Bearing Race	1	110811•	110811•	
34	Bearing Cone	1	132060•	132060•	
35	Inter-Axle Diff Assy	1	134192	134192	134192 replaces 128634, 129771
36	Helical Side Gear & Bushing Assy Gear Stamp#130906-NSS	1	130907	130907	(Includes item 37)
37	Bushing - Helical Gear	2	129371	129371	
38	Thrust Washer - Helical Gear	1	132439•	132439•	
39	Lockout Sliding Clutch	1	127510	127510	

Single Reduction-Forward Axles After June 2008

Item	Description	Qty	DSP40(P) DSP41(P)	DDP40(P) DDP41(P)	Notes
40	Oil Retainer	1	128700	128700	
41	Input Shaft Bearing Cone	1	129558•	129558•	
42	Bearing Cup	1	1008912•	1008912•	can use 129559
For PDU Cover & Lockout Details See page 20					
OIL SEAL & SHIM KIT		1	216224	216224	Includes shims & oil seals 127591/127592
PINION CAGE SHIM KIT		1	504032	504032	Includes 5 each of the shims listed below
43	Shim.003"	AR	127595•	127595•	
	Shim.005"		127596•	127596•	
	Shim.010"		127597•	127597•	
	Shim.020"		127598•	127598•	
	Shim.030"		127599•	127599•	
44	Oil Seal-V-Ring	1	128703•	128703•	
45	Input Brg Cover Assy	1	129575	129575	Cast#129574C, Includes item 42
46	Bearing Cover Cap Screw	6	210115	210115	
47	Oil Seal	1	127591•	127591•	
48	Locknut	1	128049	128049	In 510593 Kit, M42-1.5 (55mm socket)
49	Lube Trough	1	129577	129577	
50	Power Divider Cover	1	130823	130823	11 hole design
51	Washer - Capscrew	11	128415	128415	
52	Capscrew Long	11	210091	210091	
SHIFT FORK & COMPRESSION SPRING KIT		1	510870	510870	Includes Items 53 & 54
53	Shift Fork Assy - NSS	1	129856	129856	Order kit 510870
54	Compression Spring	1	129859	129859	
55	Piston Cover Assy	1	129573	129573	Includes Cover #129578 and item 56
56	O-Ring	1	129579	129579	
57	Piston	1	129580	129580	
58	O-Ring	1	210180	210180	
59	Shipping Plug	1	599792	599792	
60	Thrust Screw	1	126193	126193	
61	Jam Nut	1	210184	210184	
62	RTV - Sealant	1	107276S•	107276S•	Not Illustrated

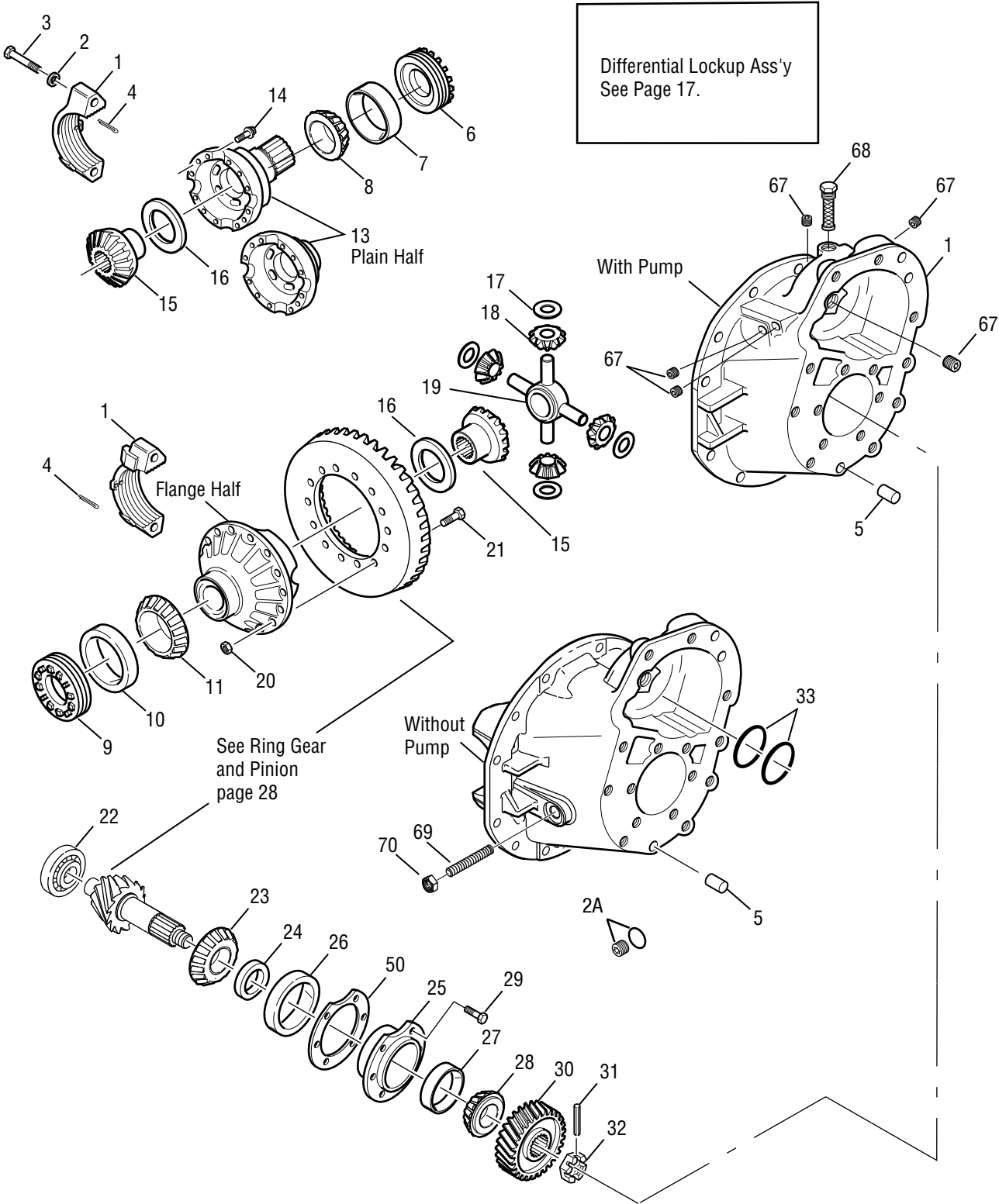
NSS - Not Sold Separately

Summary of Kits and Assemblies

Air L/O Kit - Complete	510052	Includes: 53-59
Repair Kit	510053	Includes: 55-58
Shift Fork & Compression Spring Kit	510870	Includes: 53-54

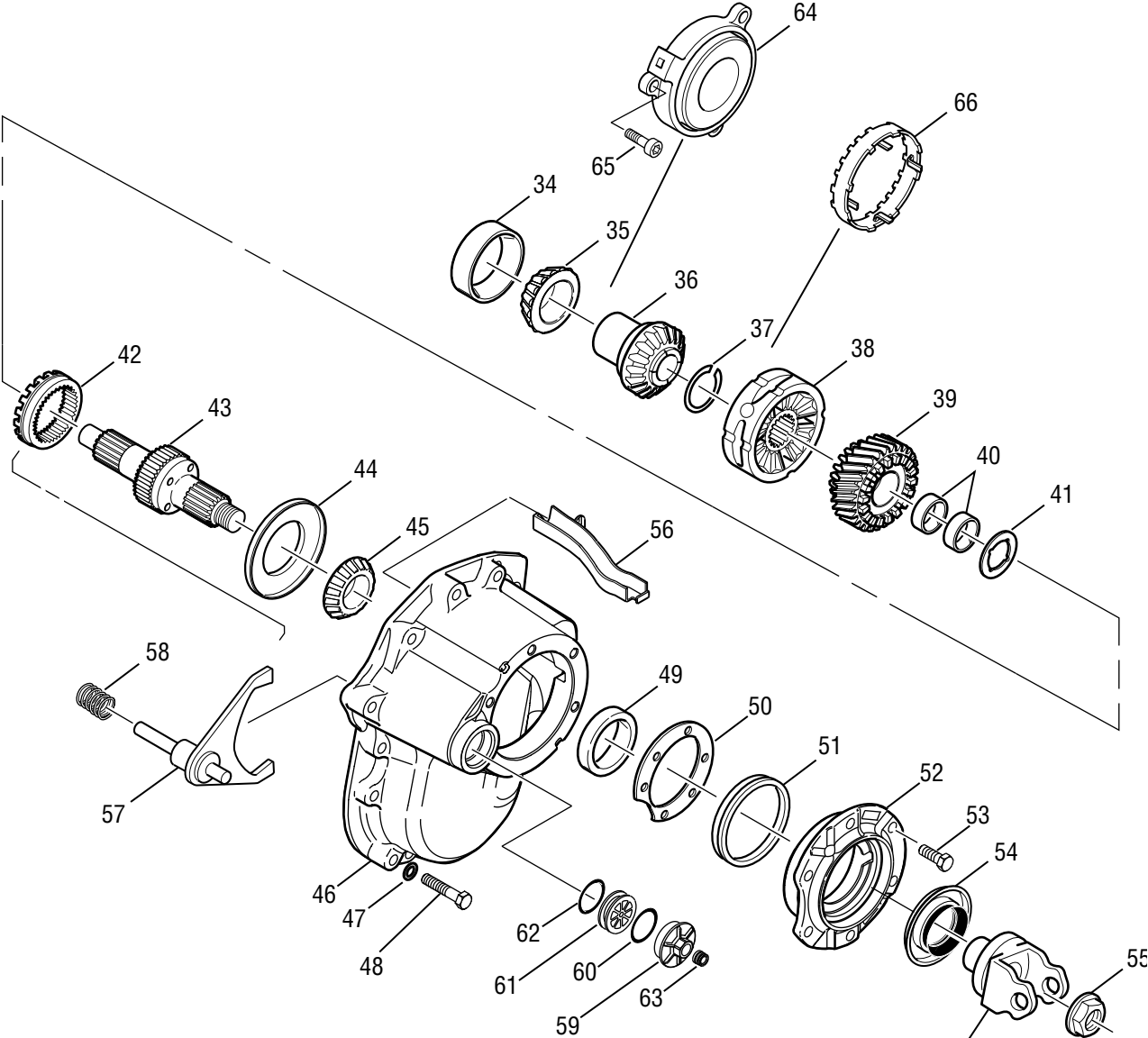
Single Reduction-Forward Axles Before June 2008

Single Reduction-Forward Axles - Before June 2008



Single Reduction-Forward Axles
Before June 2008

Single Reduction-Forward Axles - Before June 2008



See Yokes
and Flanges
Page 32

Single Reduction-Forward Axles Before June 2008

Item	Description	Qty	DSP40(P) DSP41(P)	DDP40(P) DDP41(P)	Notes
BASIC OVERHAUL KIT			510393	510399	Contents Identified with •
BEARING KIT			512812	512800	Contents Identified with *
1	Diff Carr & Brg Caps Kits-NLA Included: 1-3, 5, 67, 69-71 and fasteners from 512087 pg 24 note 1 NOTE: All Original Carr/Caps are NLA, Must Purchase Complete Carrier. Refer to bulletin abib-0805	Kits NLA - See Chart and Notes Below			
			Model Type	Part No.	Notes
			DSP40, DSP41	510023-NLA	Casting #130809
			DSP40P, DSP41P	510024-NLA	Casting #130819
			DDP40, DDP41	510027-NLA	Casting #130814
			DDP40P, DDP41P	510028-NLA	Casting #130814
2	Flat Washer	4	210288	210288	
2A	Plug & O-ring Assembly	1	131809	131809	O-ring not sold seperately
3	Capscrew	4	210095	210095	
4	Cotter Pin	2	090873	090873	Replaces 126156
5	Dowel Pin	2	007641	007641	
6	Diff Brg Adjuster - Plain Half	1	129130	128616	
7	Brg Cup - Plain Half	1	129566•*	015092•*	
8	Brg Cone - Plain Half	1	129565•*	128604•*	
9	Diff Brg Adjuster - Flange Half	1	129128	129128	
10	Brg Cup - Flange Half	1	129564•*	129564•*	Replaces 90943
11	Brg Cone - Flange Half	1	129563•*	129563•*	Replaces 6082
WHEEL DIFF. CASE KITS					Includes items 12-14
12	Diff Case-RH (Flg Half)	1			
	133737 (was 129464)note-12		508653	508724	Ratios 2.64 to 3.25
	133738 (was 129465)note-12		508654	508725	Ratios 3.36 to 3.90
	133739 (was 129466)note-12		508655	508726	Ratios 4.11 to 4.88
	133740 (was 129467)note-12		508656	508727	Ratios 5.29 to 7.17
13	Diff Case-LH (Plain Half)-Standard Mdl	1	132437	---	Was 127498 see note-12 below
	Diff Case-LH (Plain Half)-Diff Lock Mdl	1	---	128607	
14	Capscrew	12	127465	128619	

NOTE 1: On June 3, 2002, the design of the carrier mounting flange changed. The new carrier's are designed with a "Thick Flange". Carriers designed with a "Thick Flange" require the use of "long" capscrews. The fastening hardware for these models can be found on pages 23-24 of this IPL. Refer to Dana bulletin ABIB-0210R1 for further details.

NOTE 12: All diff case halves are now available separately. Design enhancements in the diff cases were released in 2007, refer to bulletin ABIB-0704.

Single Reduction-Forward Axles Before June 2008

Item	Description	Qty	DSP40(P) DSP41(P)	DDP40(P) DDP41(P)	Notes
WHEEL DIFF SIDE GEAR KIT			510397	510397	Includes items 15-19
WHEEL DIFF KIT w/o SIDE GEARS			510396	510396	Includes items 16-19
15	Side Gear 41 Inv spline	2	127368	127368	
16	Side Gear Thrust Washer	2	127386•	127386•	
17	Side Pinion Thrust Washer	4	129305•	129305•	
18	Side Pinion	4	133784	133784	Was 129765
19	Diff Spider	1	129599	129599	
RING GEAR NUT & BOLT KIT			508652	508652	Includes items 20-21
20	Nut	16	126216	126216	
21	Bolt	16	129686	129686	129686 Replaces 128806
22	Pinion Pilot Brg	1	127484•*	127484•*	
23	Pinion Brg Cone - Inner	1	129560•*	129560•*	
24	PINION BRG SPACER (SVC KIT)	AR	504043	504043	Individual Pinion Bearing Spacers Listed on page 11
25	Pinion Brg Cage & Cup Assy Cage #127488C NSS	1	129767	129767	Includes item 25-27
26	Pinion Brg Cup - Inner	1	129561•*	129561•*	
27	Pinion Brg Cup - Outer	1	012495•*	012495•*	
28	Pinion Brg Cone - Outer	1	127535•*	127535•*	
29	Capscrew	6	210115	210115	
30	Pinion Helical Gear	1	127523	127523	
31	Roll Pin	1	118807	118807	
32	Slotted Pinion Nut	1	126182	126182	
33	Output Shaft O-Ring	2	127545•	127545•	
34	Output Shaft Brg Cup	1	127536•*	127536•*	
35	Output Shaft Brg Cone	1	110812•*	110812•*	
36	Output Shaft Side Gear	1	127645	127645	
37	Snap Ring	1	085997•	085997•	
38	Inter-Axle Diff Assy	1	134192	134192	Replaces 128634 and 129771
39	Helical Side Gear & Bushing Gear #130906 NSS	1	130907	130907	Replaces 127495 Includes Item 40
40	Bushing - Helical Gear	2	129371	129371	Replaces 127543
41	Thrust Washer - Helical Gear	1	128702•	128702•	
42	Lockout Sliding Clutch	1	127510	127510	
43	Input Shaft Kit shaft# 129770-NSS	1	510593	510593	Includes Items 41, 43, 55 Replaces 510394
44	Oil Retainer	1	128700•	128700•	

Single Reduction-Forward Axles Before June 2008

Item	Description	Qty	DSP40(P) DSP41(P)	DDP40(P) DDP41(P)	Notes
45	Input Shaft Bearing Cone	1	129558•*	129558•*	Replaces 820643
46	PDU Cover	1	130823	130823	See Note 46, replaces 129572
47	Washer	11	128415	128415	
48	Capscrew Long	11	210091	210091	See Note 46
49	Bearing Cup	1	1008912•*	1008912•*	Can use 129559
OIL SEAL & SHIM KIT		1	216224	216224	Includes shims & oil seals 127591/127592
PINION CAGE SHIM KIT		1	504032	504032	Includes 5 each of the shims listed below
50	Shim.003"	AR	127595•	127595•	
	Shim.005"		127596•	127596•	
	Shim.010"		127597•	127597•	
	Shim.020"		127598•	127598•	
	Shim.030"		127599•	127599•	
51	Oil Seal-V-Ring	1	128703•*	128703•*	
52	Input Brg Cover Assy - #129574C		129575	129575	Includes item 49
53	Bearing Cover Cap Screw	6	210115	210115	
54	Oil Seal	1	127591•*	127591•*	
55	Locknut	1	128049	128049	In 510394 Kit (M42-1.5)
56	Lube Trough	1	129577	129577	
57	Shift Fork Assy - NSS	1	129856	129856	Order Kit 510870
58	Compression Spring	1	129859	129859	
SHIFT FORK & COMPRESSION SPRING KIT		1	510870	510870	Includes 57-58
59	Piston Cover Assy	1	129573	129573	Includes Cover #129578 & Item 60
60	O-Ring	1	129579	129579	
61	Piston	1	129580	129580	
62	O-Ring	1	210180	210180	
63	Shipping Plug	1	599792	599792	
64	Lube Pump Assembly	1	127534	127534	Pump Models Only
65	Capscrew	3	127551	127551	Pump Models Only
66	Drive Coupling - Service	1	128628	128628	Pump Models Only
67	Pipe Plug	5	090897	090897	Pump Models Only
68	Filter Screen Assy	1	127649	127649	Pump Models Only
69	Thrust Screw	1	126193	126193	M24 x 2-6g
70	Jam Nut	1	210184	210184	
71	RTV - Sealant	1	107276S•*	107276S•*	Not Illustrated

NSS - Not Sold Separately

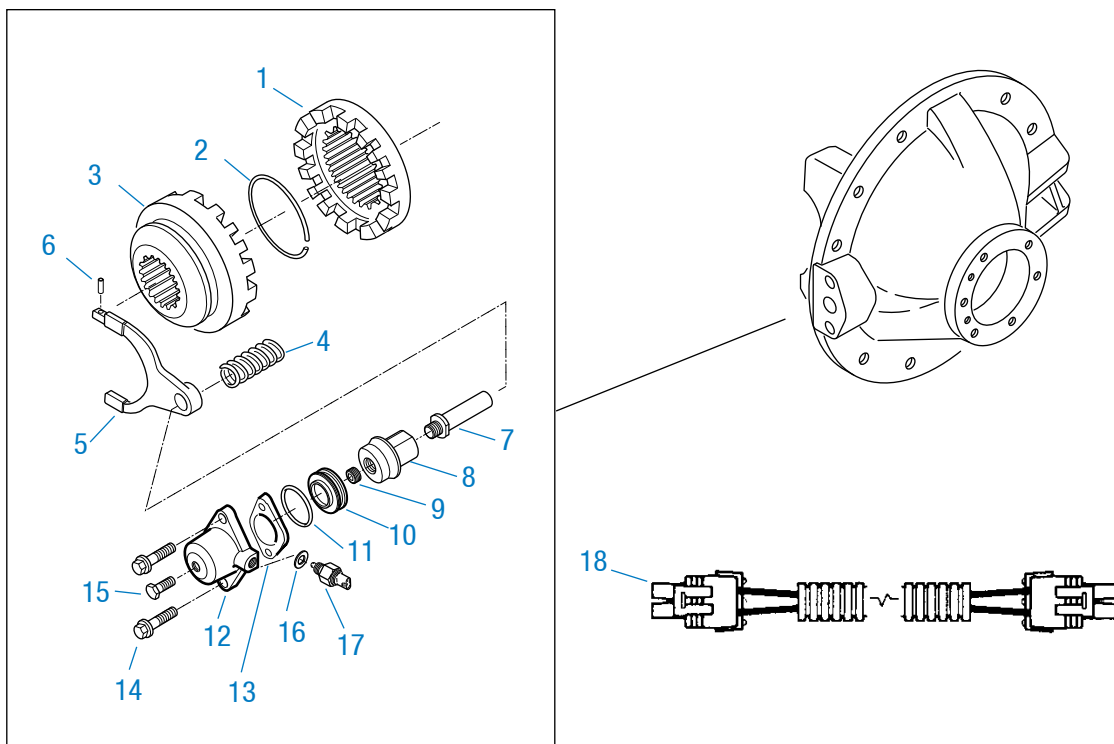
NOTE 46: On June 3, 2002, the design of the power divider cover changed. The original PDU covers (P/N: 129572) have 9 holes and require 9 fasteners. The current design PDU covers (P/N: 130823) have 11 holes and require the use of 11 long fasteners. The new 130823 PDU covers now replace the 129572 covers in service. The 9-hole PDU cover will NOT work on a carrier machined with 11 holes, use like PDU covers with like carriers.

Summary of Kits and Assemblies

Air L/O Kit - Complete	510052	Includes items 57- 59, 61- 62
Repair Kit	510053	Includes items 59, 61-62
Shift Fork & Compression Spring Kit	510870	Includes 57-58

Wheel Differential Lock Assembly

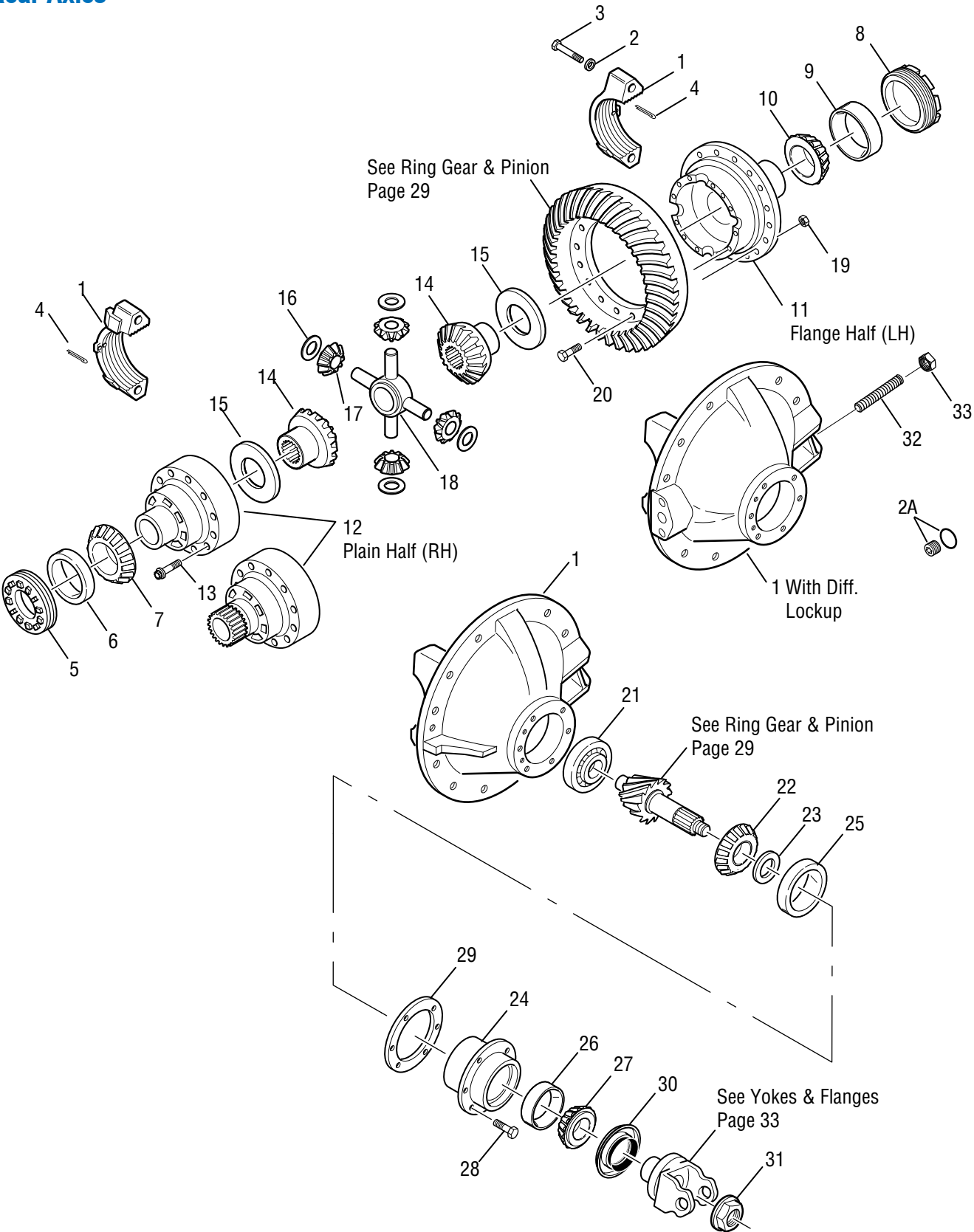
Wheel Differential Lock Assembly



Item	Description	Qty	All Diff Lock Models	Notes
1	Fixed Curvic Clutch Gear	1	128627	
2	Snap Ring	1	129433	
3	SL Curvic Clutch Gear - 41 Inv spline	1	126840	
4	Compression Spring	1	128614	
SHIFT FORK ASSY			217465	Includes items 5-6
5	Shift Fork - 128611C NSS	1	—	128609 Fork – NSS
6	Spring Pin	1	210020	
7	Push Rod	1	128617	
8	Piston Driver	1	128640	
9	Set Screw	1	128618	
10	Piston	1	128624	
11	O-Ring	1	210180	
12	Piston Cover	1	129425	
13	Gasket	1	128643	
14	Capscrew - Flg Head	2	128744	
15	Capscrew	1	128274	M12 x 1.5
16	Washer	1	129034	
17	Switch	1	129035	
18	Wiring Harness	1	129047	

Rear Axles

Rear Axles



Rear Axles

Rear Axles

Item	Description	Qty	P20060 P22060 RSP40 RSP41	P20060D P22060D RDP40 RDP41	Notes
BASIC OVERHAUL KIT			510398	510400	Contents Identified with •
1	DIFF CARR & BRG CAPS KIT Includes 1-3, 32-34 and fasteners from 512087 page 24 See Note-1		510018 ---	--- 510017	Casting # 130824 Casting # 130827
2	Flat Washer	4	210288	210288	
2a	Plug & O-Ring Assembly	1	131809	131809	O-ring not sold seperately
3	Capscrew	4	210095	210095	
4	Cotter Pin	2	90873	90873	
5	Diff Brg Adjuster - Plain Half	1	129130	128616	
6	Bearing Cup - Plain Half	1	129566 •	015092 •	
7	Bearing Cone - Plain Half	1	129565 •	128604 •	
8	Diff Brg Adjuster - Flange Half	1	129128	129128	
9	Bearing Cup - Flange Half	1	129564 •	129564 •	
10	Bearing Cone - Flange Half	1	129563 •	129563 •	
WHEEL DIFF. CASE KITS					Includes items 11-13
11	Diff Case-RH (Flg Half) 133737 (was 129464)note-11 133738 (was 129465)note-11 133739 (was 129466)note-11 133740 (was 129467)note-11	1	508653 508654 508655 508656	508724 508725 508726 508727	Ratios 2.64 to 3.25 Ratios 3.36 to 3.90 Ratios 4.11 to 4.88 Ratios 5.29 to 7.17
12	Diff Case-LH (Plain Half)-Standard Diff Case-LH (Plain Half)-Diff Lock	1 1	132437 ---	--- 128607	Was 127498 see note-11 below
13	Capscrew	12	127465	128619	
WHEEL DIFF SIDE GEAR KIT			510397	510397	Includes items 14-18
WHEEL DIFF KIT w/o SIDE GEARS			510396	510396	Includes items 15-18
14	Side Gear 41 Inv spline	2	127368	127368	
15	Side Gear Thrust Washer	2	127386 •	127386 •	
16	Side Pinion Thrust Washer	4	129305 •	129305 •	
17	Side Pinion	4	129765	129765	
18	Diff Spider	1	129599	129599	

NOTE 1: On June 3, 2002, the design of the carrier mounting flange changed. The new carrier's are designed with a "Thick Flange". Carriers designed with a "Thick Flange" require the use of "long" capscrews. The fastening hardware for these models can be found on pages 23-24 of this IPL. Refer to Dana bulletin ABIB-0210R1 for further details.

NOTE 11: All diff case halves are now available separately. Design enhancements in the diff cases were released in 2007, refer to bulletin ABIB-0704.

Rear Axles

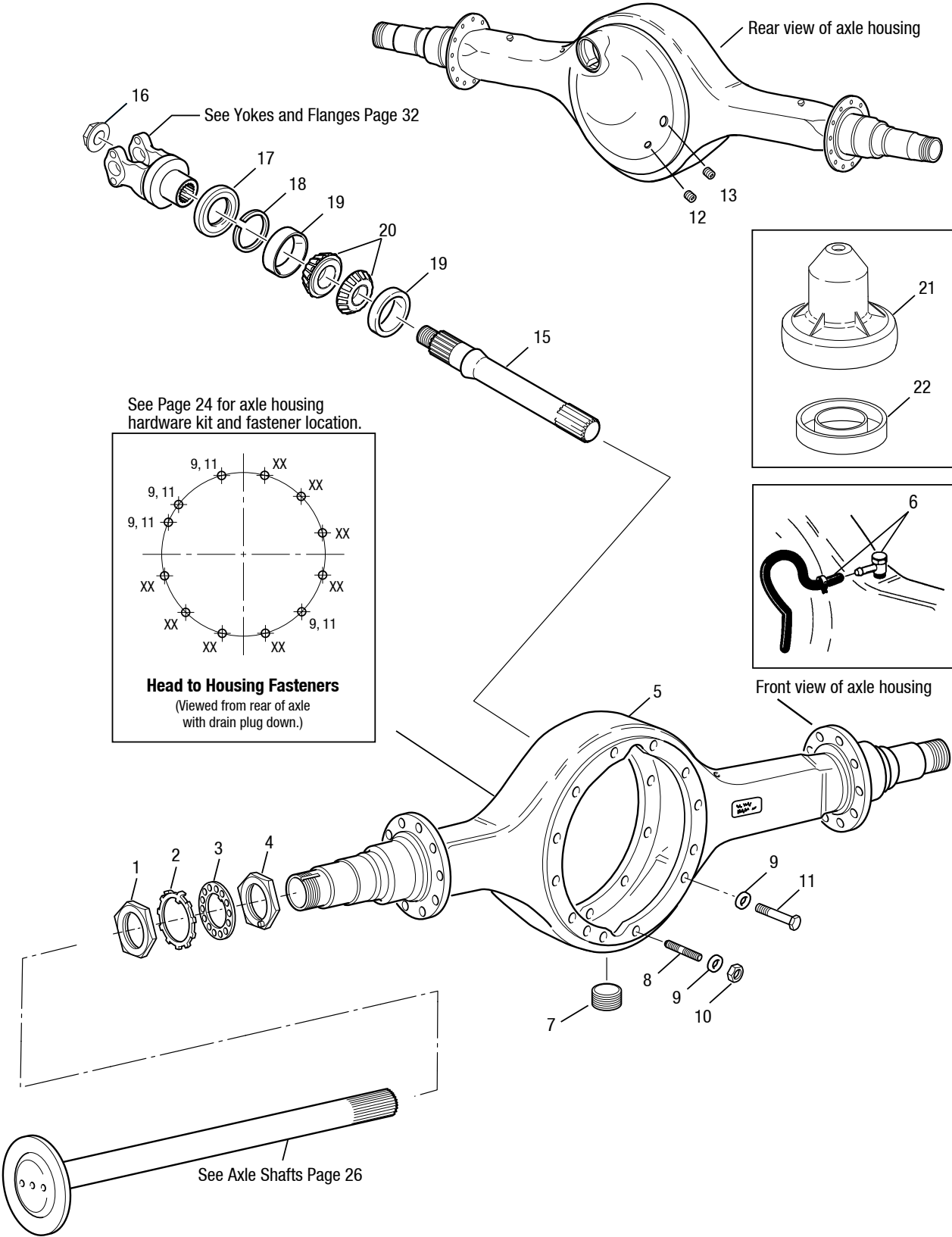
Rear Axles

Item	Description	Qty	P20060 P22060 RSP40 RSP41	P20060D P22060D RDP40 RDP41	Notes
RING GEAR NUT & BOLT KIT			508652	508652	Includes items 19-20
19	Nut	16	126216	126216	
20	Bolt	16	129686	129686	
21	Pinion Pilot Brg	1	127485 •	127485 •	
22	Pinion Brg Cone - Inner	1	129562 •	129562 •	
23	PINION BRG SPACER (SVC KIT)	1	504016	504016	Individual Pinion Brg Spacers Listed on page 11
24	Pinion Brg Cage & Cup Assy	1			Includes items 24-26
	Cage #127481C NSS		129768	129768	Standard Design
	Cage #129995C NSS		129996	129996	Parking Brake Design
25	Pinion Brg Cup - Inner	1	129561 •	129561 •	
26	Pinion Brg Cup - Outer	1	012495 •	012495 •	
27	Pinion Brg Cone - Outer	1	012496 •	012496 •	
28	Capscrew	6	210115	210115	
OIL SEAL & SHIM KIT			216225	216225	Includes items 29-30, 34
PINION CAGE SHIM KIT			504032	504032	Includes 5 each of the shims listed below
29	Shim.003	AR	127595 •	127595 •	
	Shim.005		27596 •	127596 •	
	Shim.010		27597 •	127597 •	
	Shim.020		27598 •	127598 •	
	Shim.030		27599 •	127599 •	
30	Oil Seal	1	127591 •	127591 •	
31	Pinion Nut	1	127589	127589	M36 x 1.5 (55mm socket)
32	Thrust Screw	1	126193	126193	M24 x 2-6g
33	Jam Nut	1	210184	210184	
	RTV Sealant	1	107276S •	107276S •	Not Illustrated

NSS - Not Sold Separately

Output Shaft and Axle Housings

Output Shaft and Axle Housings



Output Shaft and Axle Housings

Output Shaft and Axle Housings

Item	Description	Qty	Part No.	Notes
1	Outer Bearing Adjuster Nut	2	119881	
2	Lockwasher - w/Tab	2	129132	
3	Dowel-Type Lockwasher	2	119883	
4	Inner Bearing Adjuster Nut	2	119882	
5	Axle Housing Assy	1		See your OEM Catalog
6	U-Tube Breather Kit	1	507162	
7	Magnetic Drain Plug - 3/4"	1	54254	All D/R models
8-11	Carrier to Hsg Fasteners			See Page 24
12	Non-Magnetic Plug 3/4"	1	129492	
12	Magnetic Plug - 3/4"	1	129491	
13	Temperature Sensor Plug 1/2"	1	90898	
14	Lube Tag (for 3/4" Plug)	1	129486	Part - Not Illustrated
OUTPUT SHAFT KIT		1	216227	Includes Items 15-16
15	Output Shaft - #127646 NSS			
16	Locknut - Hex	1	127588	M39 x 1.5 (55mm socket)
17	Oil Seal	1	127592•*	
18	Snap Ring .103"	1	129594•*	
19	Bearing Cup	2	127539•*	
20	Bearing Cone	2	127540	
21	Seal Driver	1	126917	In Kit 217414 - See Page 34
22	Adapter	1	128706	In Kit 217414 - See Page 34
23	Loctite Adhesive	1	129293	Not Illustrated, .5 ml Tube
24	RTV Sealant	1	107276S	Not Illustrated, 3 oz. Tube

NSS - Not Sold Separately

• Included in basic overhaul kits - forward models

* Included in bearing kits - forward models