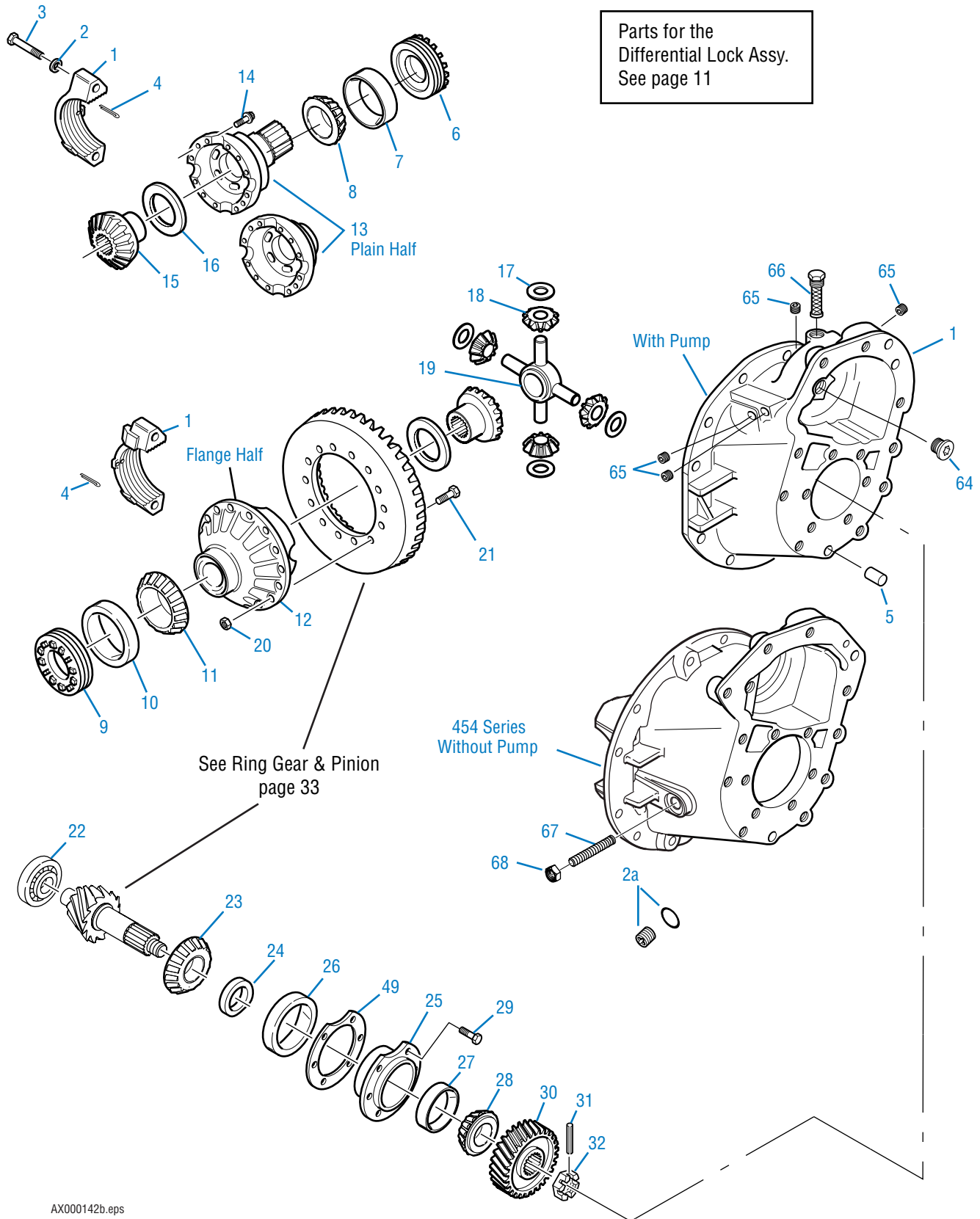
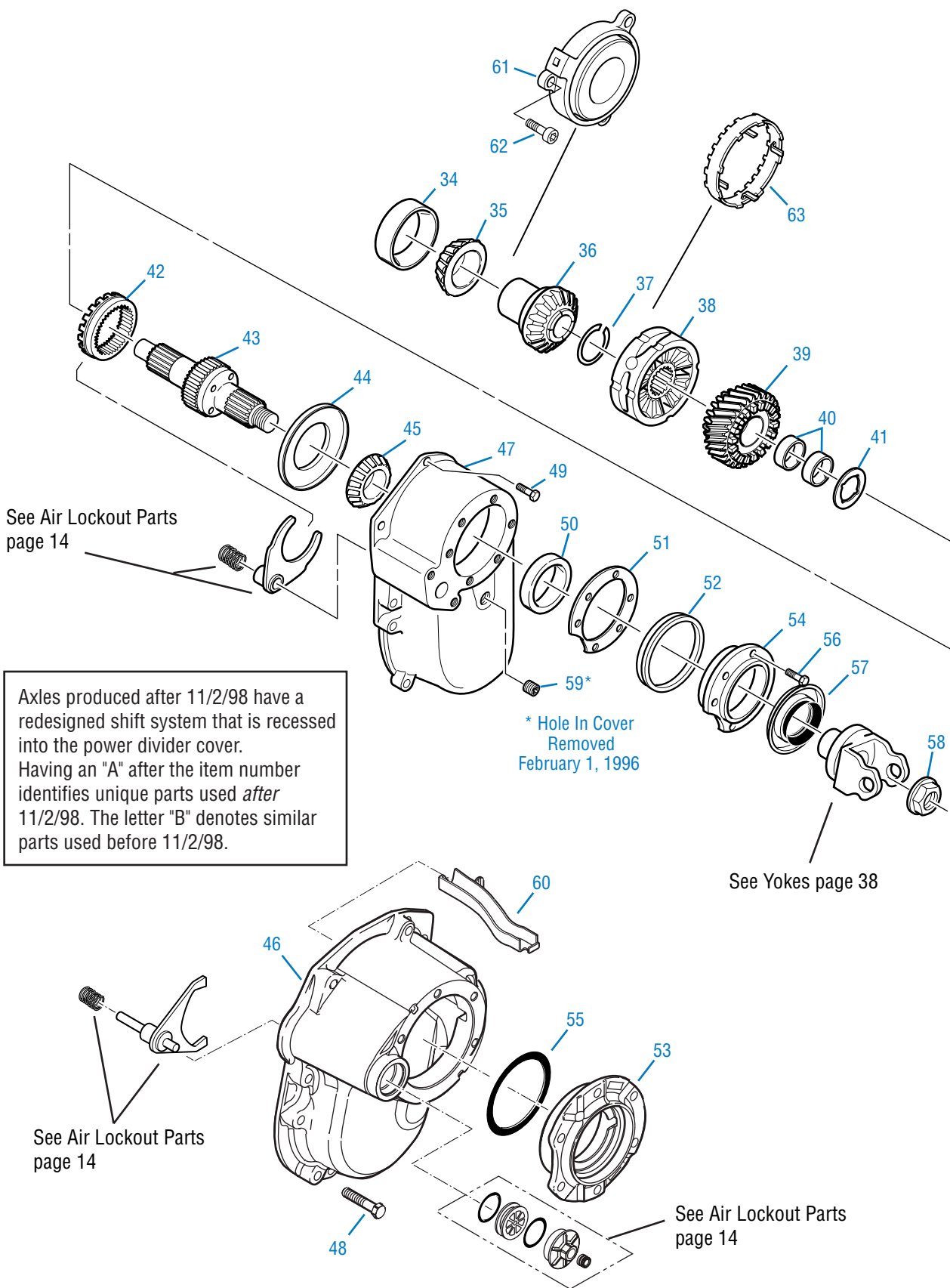


### Single Reduction-Forward Axles

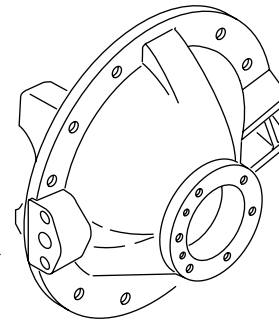
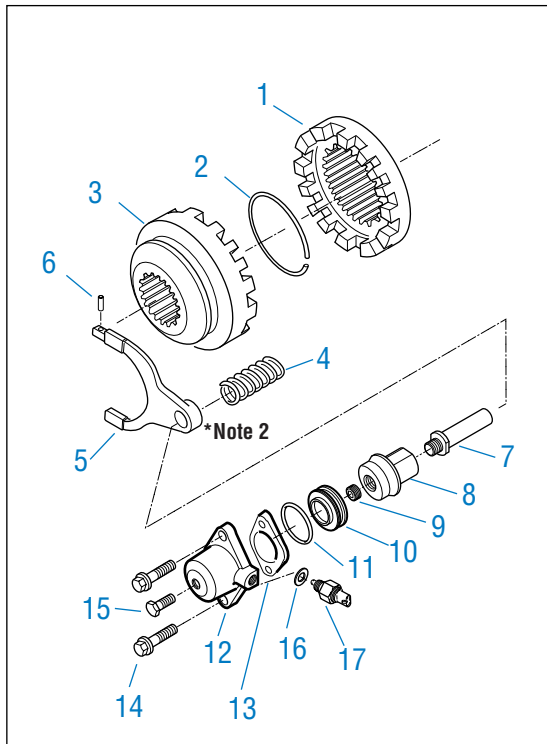


AX000142b.eps



Axles produced after 11/2/98 have a redesigned shift system that is recessed into the power divider cover. Having an "A" after the item number identifies unique parts used *after* 11/2/98. The letter "B" denotes similar parts used before 11/2/98.

## Wheel Differential Lock Assembly



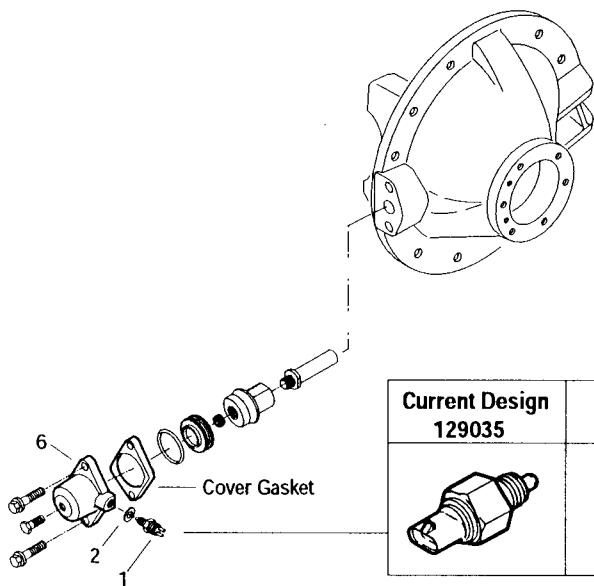
Rear carrier illustrated above. Parts for forward carrier are identical to the rear carrier.

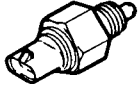
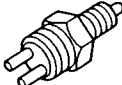
WHEEL DIFFERENTIAL LOCK ASS'Y.

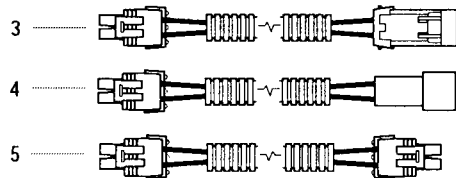
Item	Description	Qty	DD/RD404-(P) DD/RD405-(P) DD/RD454-(P)	Notes
1	Fixed Curvic Clutch Gear	1	128627	
2	Snap Ring	1	129433	Replaces 210299
3	SL Curvic Clutch Gear - 41 Inv spline	1	126840	
4	Compression Spring	1	128614	
<b>SHIFT FORK ASSY</b>			217465	Includes items 5-6
5	Shift Fork - 128611C NSS	1	—	128609 Fork – NSS
6	Spring Pin	1	210020	
7	Push Rod	1	128617	
8	Piston Driver	1	128640	
9	Set Screw	1	128618	
10	Piston	1	128624	
11	O-Ring	1	210180	
12	Piston Cover	1	—	See page 12 & 13
13	Gasket	1	128643	
14	Cap screw - Flg Head	2	128744	
15	Cap screw	1	128274	M12 x 1.5
16	Washer	1	129034	See page 12 & 13
17	Switch	1	129035	See page 12 & 13
18	Fitting Assy.	1	128178	Note 1 - Not Illustrated
19	Wiring Harness	1	—	See page 12 & 13 - Not Illustrated
20	Washer	1	210288	Note 2 - Not Illustrated

**Note 1:** Used in clearance sensitive applications, fitting also converts Metric threads to English threads.

**\*Note 2:** Washer used in diff. lock assembly in 3.90 ratios only.

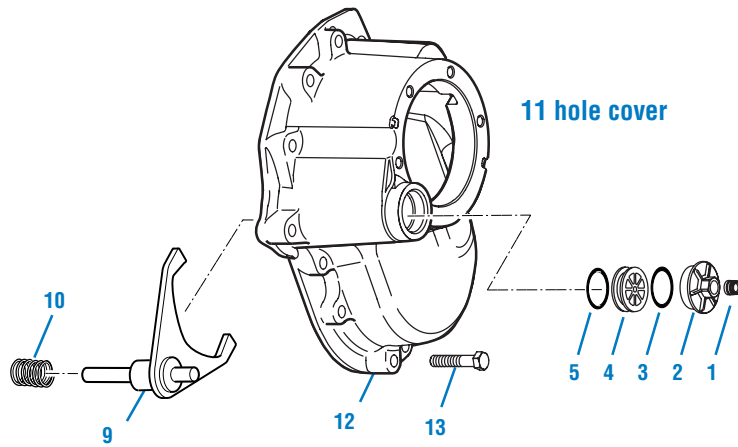


Current Design 129035	Old Design 210280
	

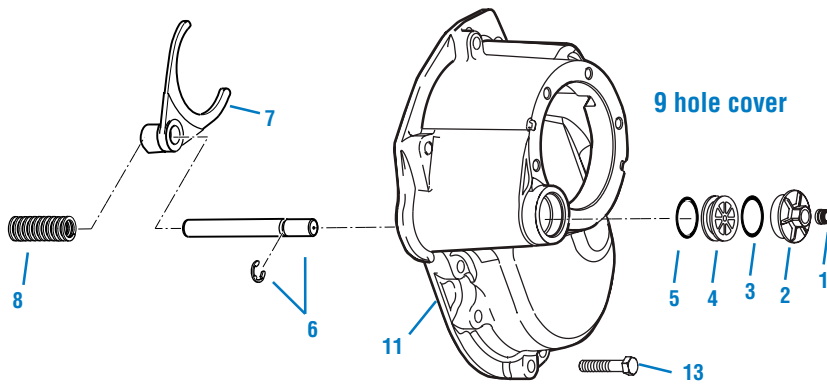


## Air Lockout Parts - After 11/2/98

### Lockout design after 2/2/00

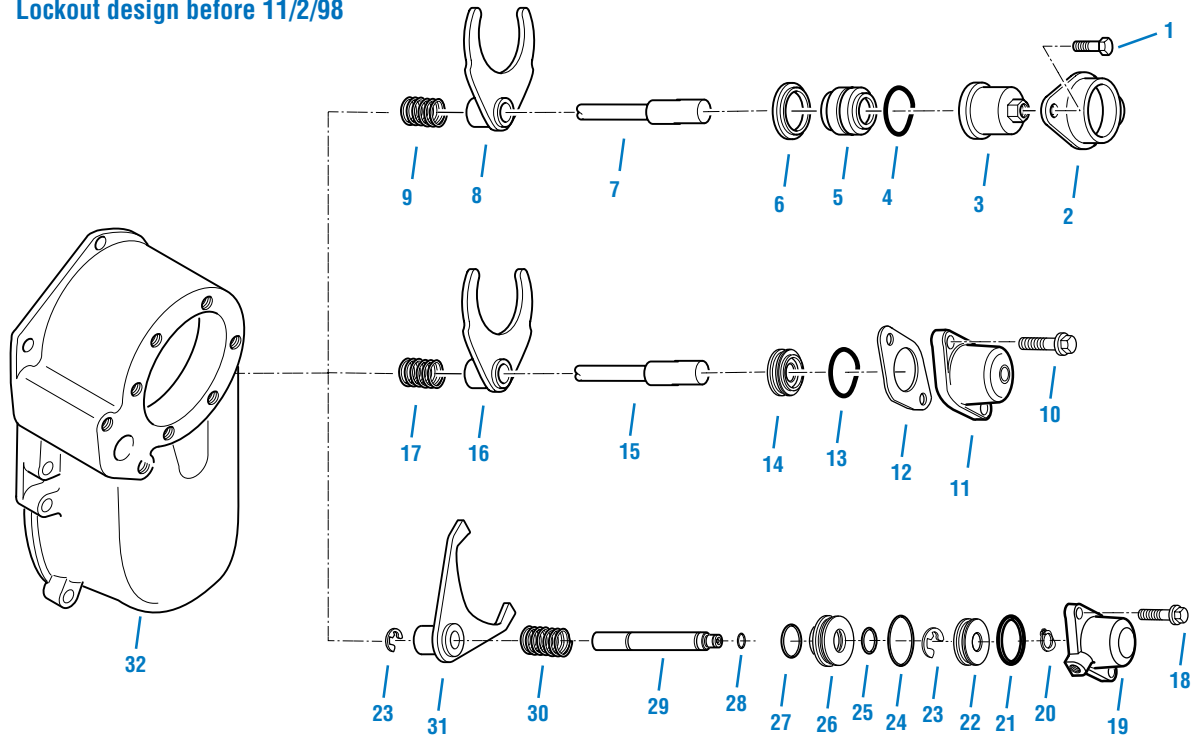


### Lockout design after 11/2/98

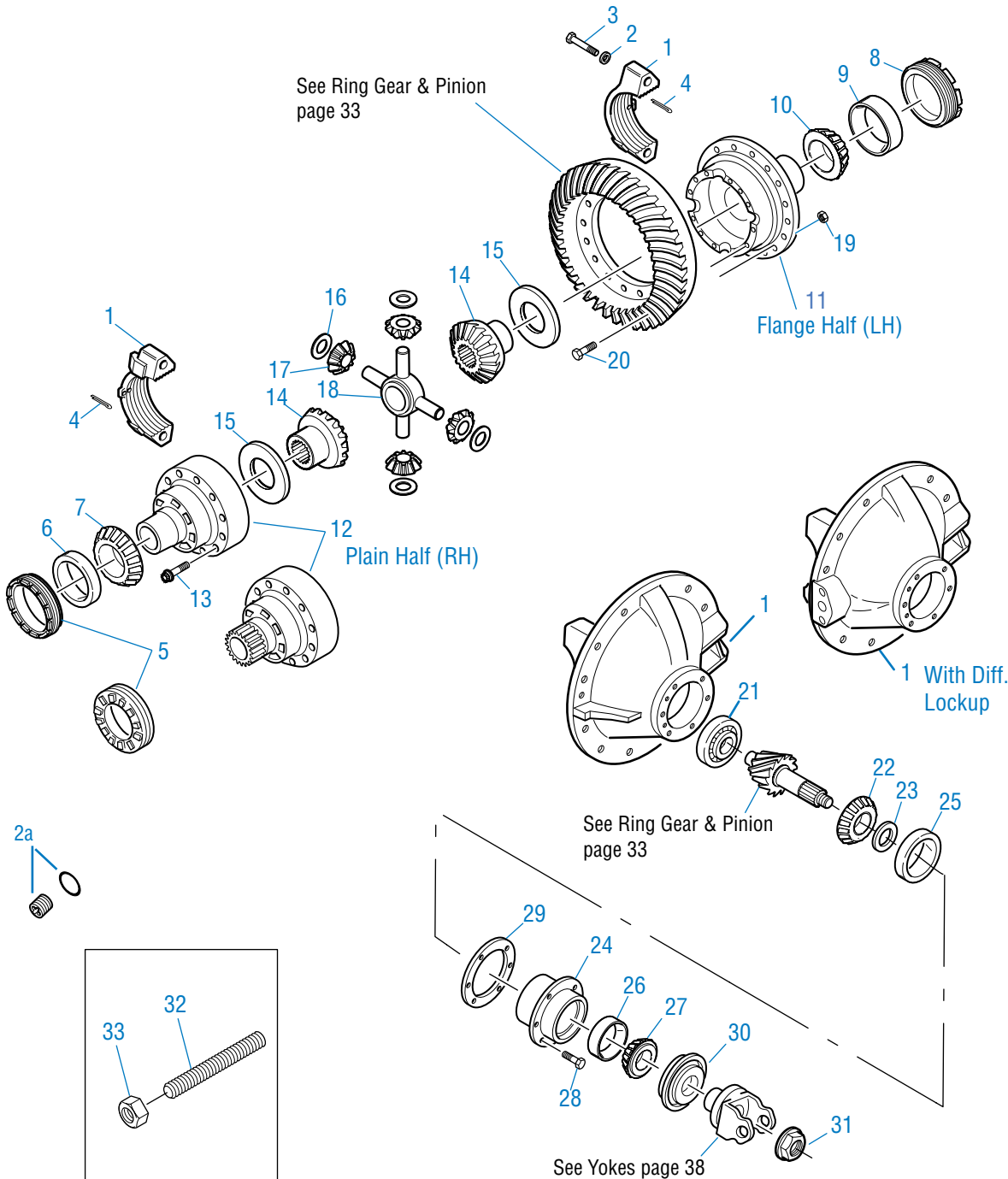


## Air Lockout Parts - Before 11/2/98

Lockout design before 11/2/98



Single Reduction - Rear Axles

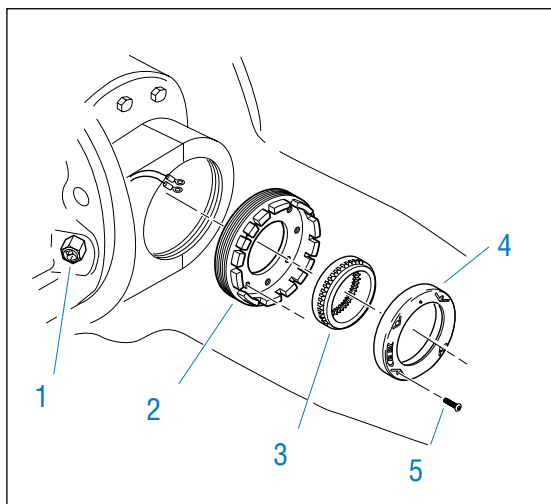


33 32

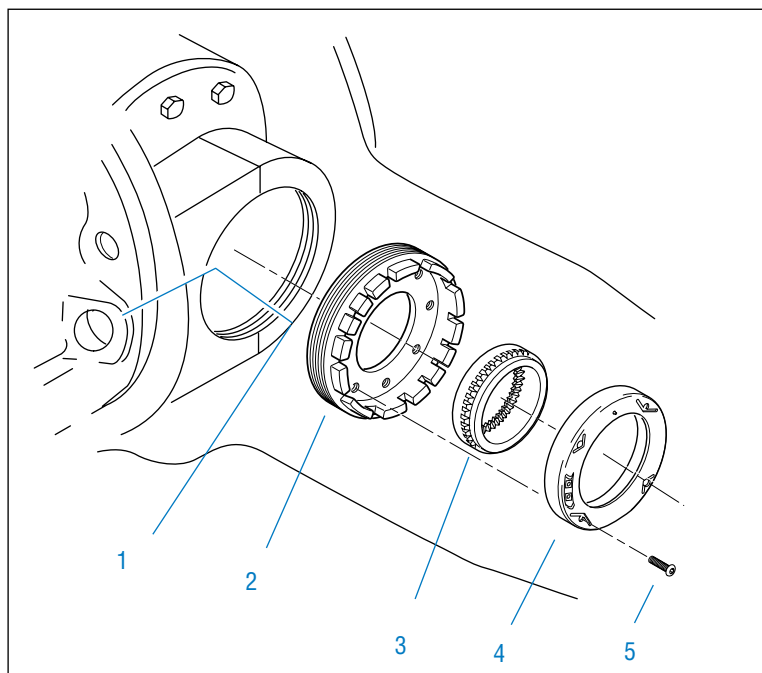
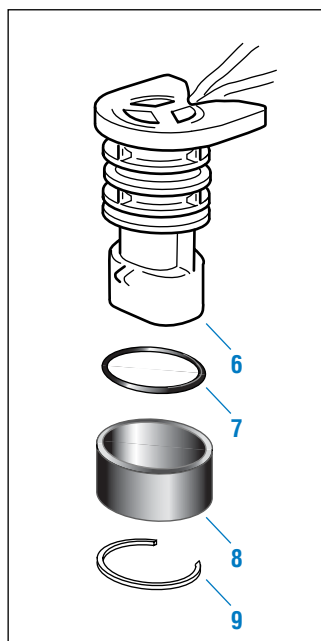
CARR/CAP for models with thrust bolt option not illustrated.

## In Axle Speed Sensor

### In Axle Speed Sensor Before 11/2/98



### In Axle Speed Sensor After 11/2/98



**Note:** Sensor connector installed up through carrier hole, reference bulletin ABIB-9901.



### Output Shaft and Axle Housings

